

SECTION 31, T.7N., R.3E., S.L.B. & M.

19

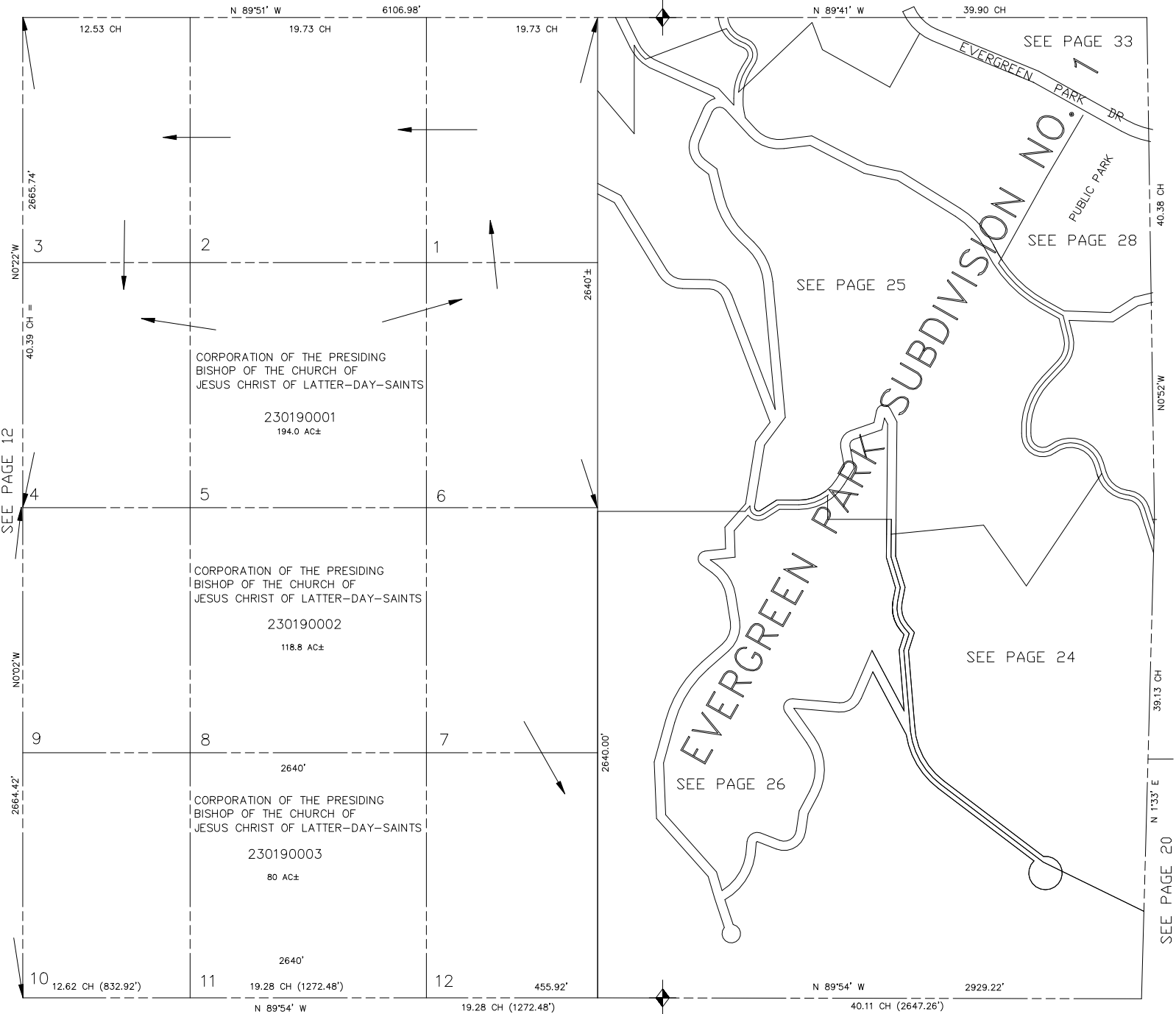
IN WEBER COUNTY

SCALE 1" = 400'

TAXING UNIT: 520

SEE PAGE 18

SEE PAGE 27



NOTE: SEE GOV. LAND OFFICE DEPENDENT RESURVEY, NOT OFFICIALLY RECORDED IN THIS OFFICE, BUT FILED IN BOOK 12 OF PLATS, PAGE 18, FOR REFERENCE PURPOSES

SEE PAGE 7